

MACON CHARTER

"RED OCTOBER"



"RED OCTOBER", an S-type Donge Dipperdredger with "Backacter 1100":

- A large dipperdredger with high penetration and breakout capacity.
- An unique "Backacter 1100" installed, especially designed for dredging purposes.
- Machinery space located inside dredge.
- Can work in seastates till max. 2.5 metres.
- The ideal tool for heavy, accurate dredging jobs.
- Equipped with spares and self contained for maintenance and repairs at remote sites.
- Efficient towing due to hydraulic tilting spuds.
- "Deep Sea" hull and a bow being adapted to deep sea towing, on own keel, world wide.
- Deckload for second equipment etc. available.
- Equipped with an auxiliary crane, "DSF 600 Lifter".
- Self manoeuvrable with 2 x 500 kW "HRP" thrusters.

MACON CHARTER



Dredge characteristics

Dimensions : 66.85 x 20.00 x 4.25 m.

Classification : Bureau Veritas: Dipperdredger Deep Sea, assisted propulsion

Spuds : - 3 stabilising spuds: 1800 x 1800 mm.

- basic length approx. 41 m.

- weight about 100 tons each

- hydraulic tilting installation

Miscellaneous - 2 x "HRP" Thrusters, 2 x 500 kW.

- the latest dredging instrumentation, with an accuracy of 5-10 cm.

MACON CHARTER



Excavator characteristics

Make	:	Backacter 1100
Engines	:	Approx. 2 x 1730 kW diesel engines, "Cummins QSK 60".
Hydraulic pumps	:	Max. capacity 11,000 ltr/min, pumps are max. 300 bar.
Bucket penetration capacity	:	up to 205 tons (real cap. and calculated "dynamically" at 300 bars)
Fuel consumption	:	about 550 litres per hour.

BA 1100	Option 1	Option 2	Option 3	Option 4	Option 5	Option 6	Option 7
Boom	18 m.	18 m.	23.8 m.	23.8 m.	23.8 m.	23.8 m.	23.8 m.
Stick	6.5 m.	10.5 m.	6.5 m.	10.5 m.	13.5 m.	15.5 m.	17.8 m.
Bucket ¹	25 m ³	20 m ³	20 m ³	15 m ³	13 m ³	10 m ³	6.5 m ³
Depth	18 m.	22 m.	22 m.	26 m.	29 m.	31 m.	33 m. ⁴
Penetr. force ²	185 tons ³	150 tons ³	150 tons	150 tons	120 tons	100 tons	80 tons

1. Bucket content based on SAE, a specific weight of 1.8 and a relative high life-time ! The lifting capacity of the BA 1100 is much more than one would conclude from the bucket data !
2. Being actual max. force on depth, no "capacity !", being a term used by others.
3. Higher penetration forces can be achieved by using the 15 m³ bucket of option 4.
4. The discharge height is such, that even if one dredges at 33 m., unloading is at about 6 m. height !

MACON CHARTER



- Accommodation and bedrooms
- Aircompressor
- Centralised greasing system
- 1 heavy hydraulic anchorwinch
- The Backacter 1100; the strongest tool of the dredging industry.
- Marinised to the latest standard
- Mooring winch of 9 tons (for barges)
- Closed bearings for dredging equipment
- 2 auxiliary cranes; 1 x DSF 600, 60 tons at 19 m., 1 x "Palfinger" 4,5 T. at 14 m.
- High placed excavator cabin.
- Large store/workshop under deck
- A sewage treatment installation
- A bilge oil water separator

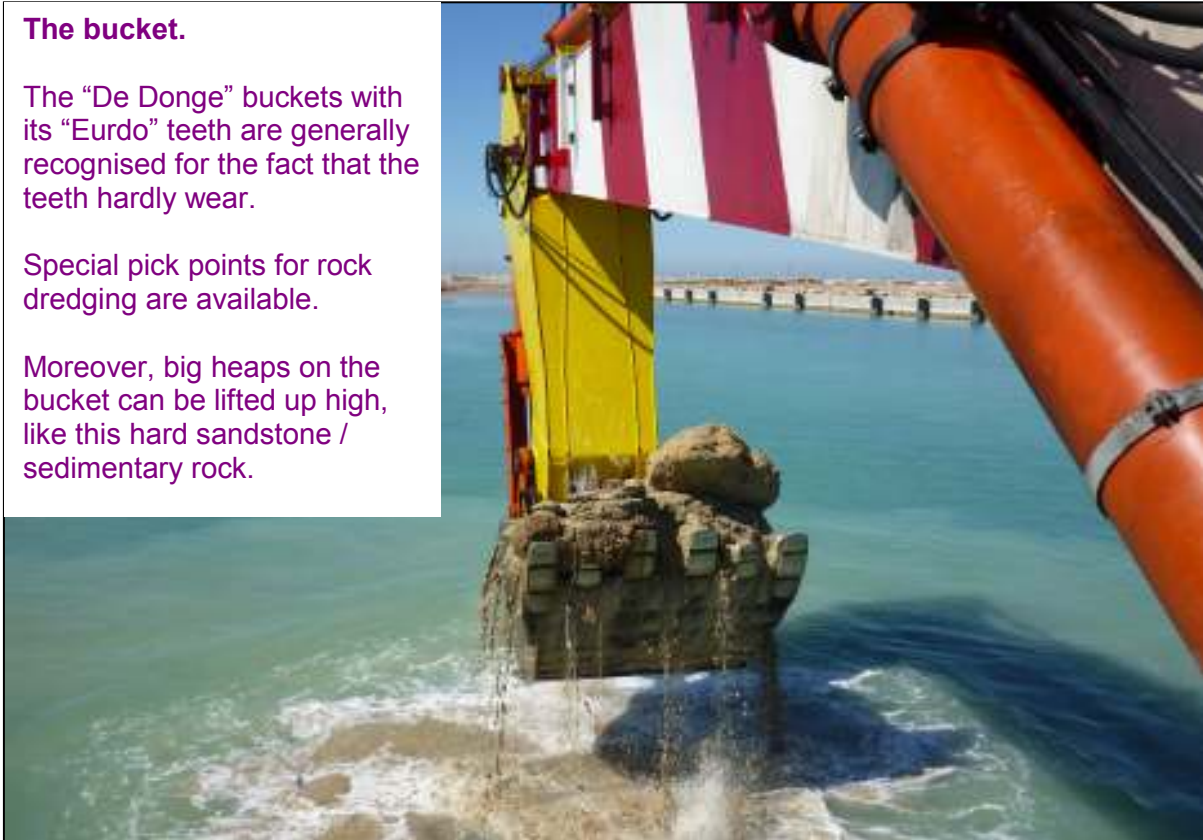
MACON CHARTER

The bucket.

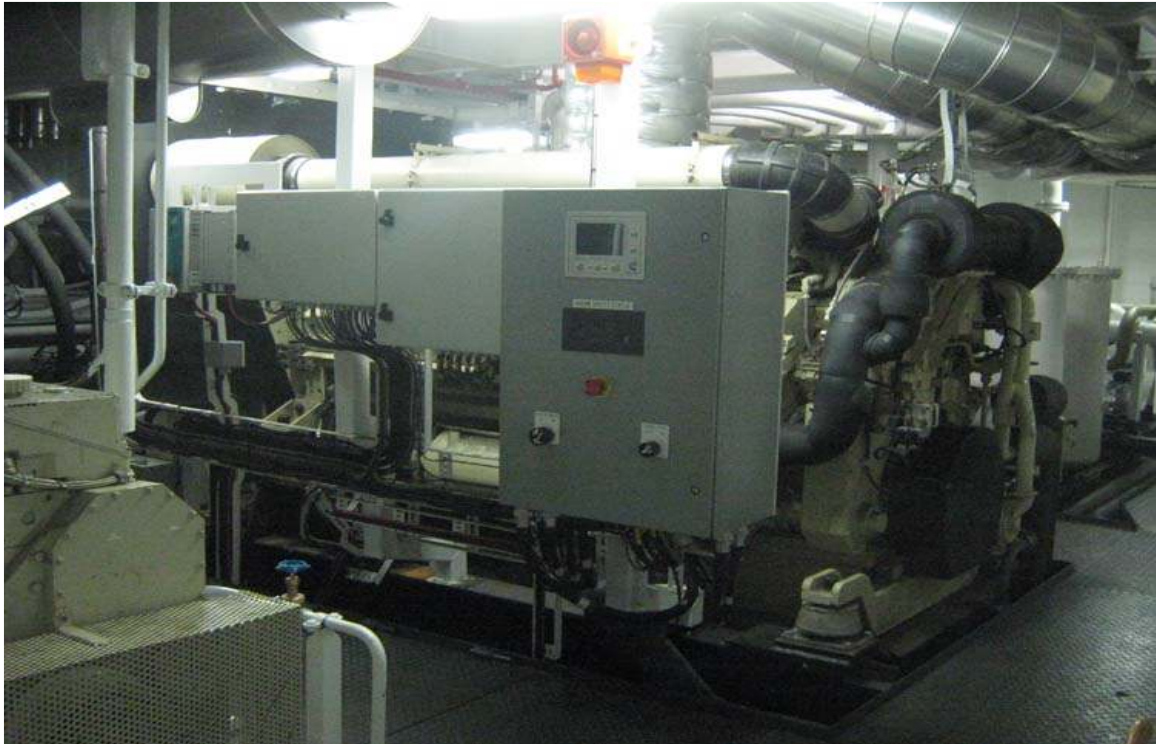
The “De Donge” buckets with its “Eurdo” teeth are generally recognised for the fact that the teeth hardly wear.

Special pick points for rock dredging are available.

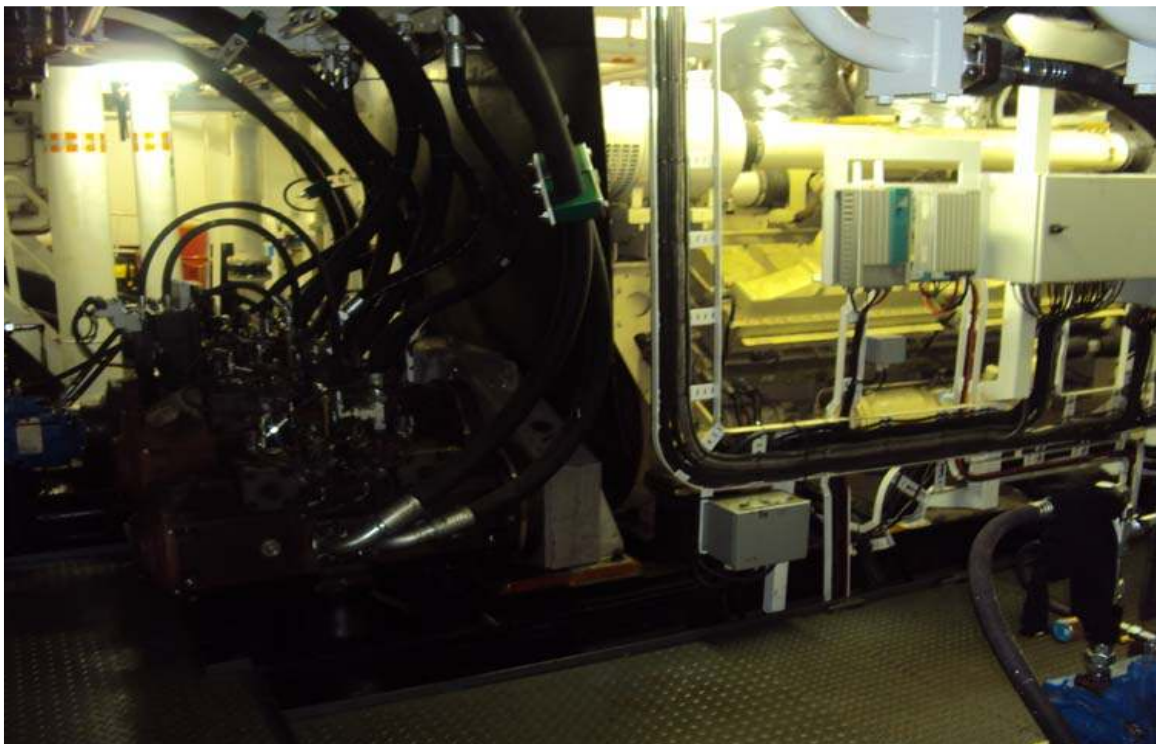
Moreover, big heaps on the bucket can be lifted up high, like this hard sandstone / sedimentary rock.



MACON CHARTER



A view in the E.R.; 2 x QSK60 Cummins engines are installed in the ER.



A view in the E.R.; all being spacious and well maintenance friendly.

MACON CHARTER



The wheelhouse.

From here the “HRP” thruster operation is controlled.

Inside the wheelhouse and operator cabin a state of the art touchscreen is provided offering all kind of parameters of performance of the engines, hydraulics, greasing, thrusters, spuds, and other relevant parameters of the dredge.



“Macon Charter” is the charter department of “Shipyards De Donge”.

“RED OCTOBER” with its unique BA 1100 is today’s strongest tool in the dredging industry.

There is no substitute for experience.